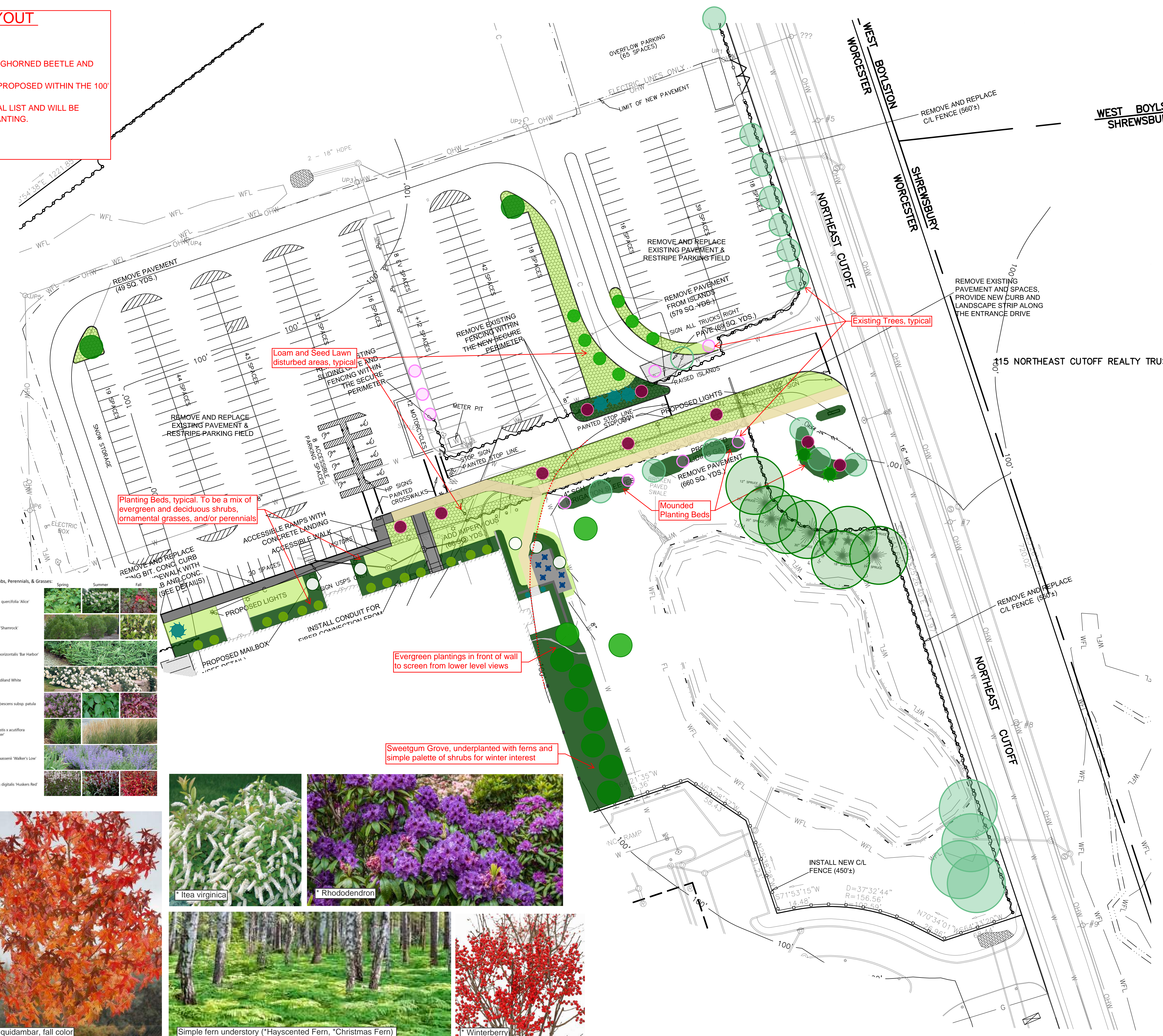
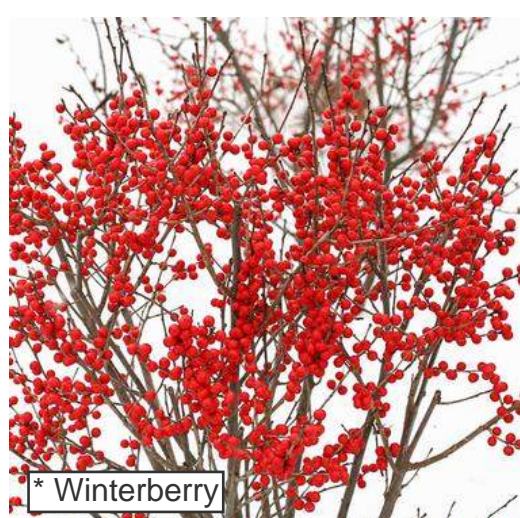


SCHEMATIC PLANTING LAYOUT

Note:
 - MARKUP IS FOR PLANTING REFERENCE ONLY.
 - ALL PROPOSED PLANTINGS WILL BE ASIAN LONGHORNED BEETLE AND EMERALD ASH BORER RESISTANT.
 - ONLY US NATIVE PLANTS (noted with *) WILL BE PROPOSED WITHIN THE 100' BUFFER.
 - THE PLANTS PROPOSED BELOW ARE A GENERAL LIST AND WILL BE DEPENDENT UPON AVAILABILITY AT TIME OF PLANTING.

10/21/2024
 VHB

Selection of additional plants to be considered:
 * Magnolia virginiana
 * Kalmia latifolia
 * Myrica pensylvanica
 * Rhus aromatica 'Gro-Low'
 * Eurybia divaricata
 * Carex pensylvanica
 * Carex platyphylla
 * Panicum virgatum



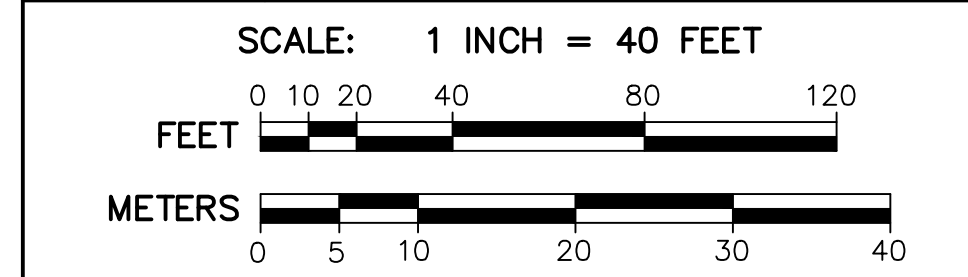
NOTES:

- VERIFY THAT THERE IS NO INCREASE IN IMPERVIOUS COVER:
 REMOVAL OF PAVEMENTS: 1,288 SQ.YDS.
 ADDITIONAL PAVEMENTS: 410 SQ.YDS.
 NET CHANGE: REDUCTION OF 878 SQ.YDS.
- REQUIRED PARKING SPACES: 277
 EXISTING PARKING SPACES: 528
 PROPOSED PARKING SPACES:
 REGULAR SPACES 268
 ACCESSIBLE SPACES 8
 EV SPACES 8
 MOTORCYCLES 12
 OVERFLOW LOT 65
 PROPOSED TOTAL: 361

THOMPSON-LISTON ASSOCIATES, INC.
 Professional Engineers Professional Land Surveyors
 Erosion Control Specialists
 P O Box 570, Boylston MA 01505
 info@tlainc.net (508) 869-6151

CLIENT: DCH PROPERTIES LLC	JOB NO.
DATE: 8/30/2024	DWG NO. 125 CLARK CURRENT

REVISIONS	
DATE:	DESCRIPTION
8/30/2024	ISSUED FOR PRICING



PLAN OF SITE IMPROVEMENTS
 125 NORTHEAST CUTOFF
 WORCESTER, MASSACHUSETTS

OWNED BY:
 DCH PROPERTIES LLC
 ASSESSORS MBL 52-006-0102A
 125 NORTHEAST CUTOFF
 WORCESTER, MASSACHUSETTS

PROPOSED SITE IMPROVEMENTS